

**Product Description:** Hemp CBD Salve 1500mg/56.7g GSO, OVCO, BWX, OCOB, ARO, DIS, MTH, VTE, BCY, GER, NMG, OPTE

**Invoice Number:** 2023-259.1

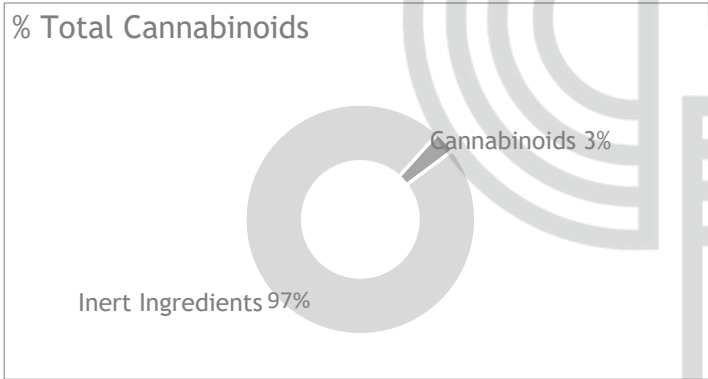
**Lot Number:** SVE-23523-B1

**Manufacture Date:** Aug 23, 2023

**Product Code:** SVE-1500-ODIS-BWB-ARO-OPTE-MTH- **Date of Analysis:** Aug 24, 2023

**Best By Date:** Aug 23, 2025

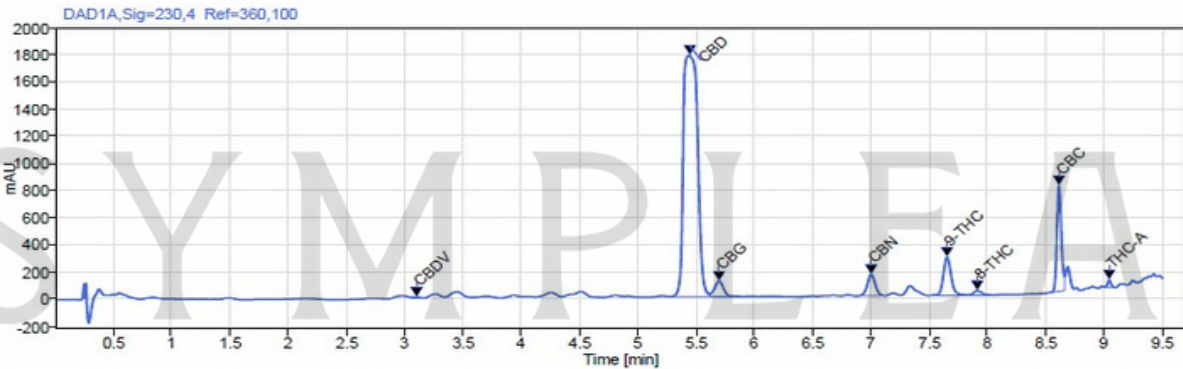
**Cannabinoid Potency - Expected CBD: 26.45mg/g ± 10%**



	mg/g	%LOQ (mg/g)	28.41 mg/g	2.84%	0.05 mg/g
<b>Total CBD:</b>	28.41 mg/g	2.84%	0.05 mg/g		
CBD:	<LOD	<LOD	0.05 mg/g		
CBDa:	<b>1.08 mg/g</b>	<b>0.11%</b>	0.05 mg/g		
d9-THC:	0.79 mg/g	0.08%	0.05 mg/g		
CBC:	0.57 mg/g	0.06%	0.05 mg/g		
CBG:	<LOQ	<LOQ	0.05 mg/g		
CBGa:	0.17 mg/g	0.02%	0.05 mg/g		
CBN:	<LOQ	<LOQ	0.05 mg/g		
CBDV:	0.09 mg/g	0.01%	0.05 mg/g		
d8-THC:	0.13 mg/g	0.01%	0.05 mg/g		
THCa:					
	<i>(kg/m3) Specific Gravity: 1.006</i>				
<b>Density:</b>	1.003				

\*Total d9-THC and CBD are calculated taking into account the loss of a carboxyl group during decarboxylation. The formulas are as follows : d9-THC = d9THC + (THCa \*(0.877)) CBD = CBD + (CBDa \*(0.877))  
 \*\*Any compounds with results listed as "<LOD" were below the Limit of Detection and were not detected.  
 \*\*\*LOQ is the limit of quantitation for any given analyte.

**Chromatogram**



Prepared By: M. McGraw  
Analytical Lead  
Aug 28, 2023

*M. McGraw*

Reviewed By: E. Casey  
Formulation and R&D Manager  
Aug 28, 2023


*E. Casey*



Analyzed via HPLC Under These Conditions: Humidity: 36% Temperature: 75.8°F

ISO 9001:2015 Certificate Number: US4293

Certificate of Analysis test results are based only on the analysis of the product listed in the "Product Description" of this form. Hammer Enterprises, LLC, makes no claims as to the efficacy, safety, or other risks associated with any detected or non-detected compounds reported herein. All analyses conducted at Hammer Enterprises, LLC, is performed on well-maintained, quality instruments utilizing Good Laboratory Practices and validated methodology. This Certificate may not be reproduced except in full, without the written approval of Hammer Enterprises, LLC. **DISCLAIMER:** When reviewing certificate ensure watermark is complete and intact. Watermark will present as repeating HE logos diagonally across the entire page. The authenticity of this document is not guaranteed if there is evident modification, blocking, or alterations of the watermark.

	<b>Product Specification Sheet</b> CBD Topical Salve Full-Spectrum	<b>Document #:</b> PSS-SVE-ODIS-BWB-OPTE-56.7 <b>Version:</b> 1.0 <b>Date:</b> 18FEB2021 <b>Supersedes:</b> NEW
30616 Bryant Drive Evergreen, CO 80439	<b>Product Code:</b> SVE-1500-ODIS-BWB-ARO-OPTE-MTH-NMG-56.7	<b>Completed By:</b> MLM <b>Invoice #:</b> 2023-259.1

**SECTION 1: PRODUCT DETAILS**

<b>PRODUCTNAME</b> CBDTopicalSalve,Full-Spectrum	
<b>PRODUCTDESCRIPTION</b> Hemp-derivedCannabidiol(CBD)TopicalSalve,Full-Spectrum	
<b>INTENDEDUSE</b> Forexternaltopicaluseonly. Donotapplyonbrokenskinoropenwounds.	

<b>COUNTRYOFORIGIN</b> USA	<b>LOT#</b> SVE-23523-B1		
<b>MANUFACTURED</b> Aug23,2023	<b>CBDPOTENCY</b> 1610.85mg/Container		
<b>BESTBYDATE</b> Aug23,2025	<b>NETWEIGHT</b> 56.7g (2oz)perContainer		

**SECTION 2: INGREDIENT INFORMATION**

<b>INGREDIENTS LIST</b>
<p>Ingredients: Organic Virgin Coconut Oil, Grapeseed Oil, Organic Beeswax, Organic Cocoa Butter, Organic Hemp Cannabidiol (CBD) Distillate, Arnica Montana Oil, Terpenes, Organic Peppermint Oil, Nutmeg, Menthol.</p> <p><i>The FDA has not evaluated this product for safety or efficacy. This product is not intended to diagnose, treat, cure or prevent any disease.</i></p> <p><b>d9-THC per container:</b> 61.23 mg/56.7g (1.08 mg/g)</p>

**SECTION 3: STORAGE AND HANDLING**

<b>STORAGEANDHANDLING</b> Storeinoriginalcontainerinacool, darkplace. Keepoutofdirectlightandhumidity.
--

*This document is provided for documentation purposes only. The information contained herein is believed to be accurate and represents the best information currently available to Hammer Enterprises Integrated Solutions, LLC. However, Hammer Enterprises Integrated Solutions, LLC makes no warranty, expressed or implied, regarding such information, and assumes no liability resulting from its use. Users should make their own investigations to determine the information suitability for their particular purposes. If there are any questions concerning the information contained in this sheet or its applicability to a particular use, the user is instructed to contact Hammer Enterprises Integrated Solutions, LLC. Hammer Enterprises Integrated Solutions, LLC assumes no responsibility for injury from the use of the product described in this sheet in a way different from that provided in the label direction*

W E L L N E S S