

Product Description: Hemp CBD Cocoa Butter Lotion 1000mg/113.4g DIW, OVCO, EWX, OCOB, OEVO, ISO, OPTE, VTE, OEUC, AEP, OTP, KSO, TCA, OCML

Invoice Number: 2023-259.2

Lot Number: LTN-25623-B1

Manufacture Date: Sep 13, 2023

Product Code:

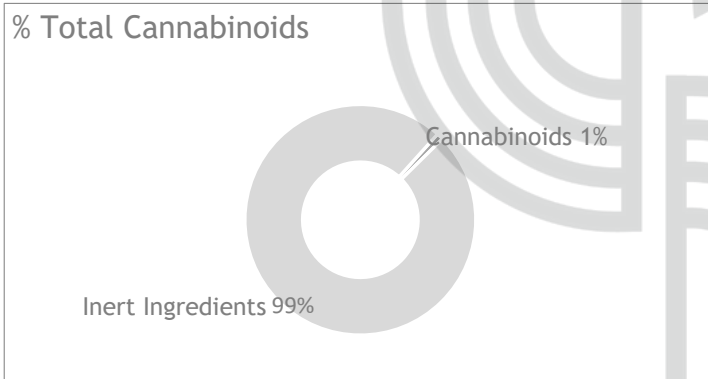
LTN-1000-ISO-COB2-OPTE-OEUC-113.4

Date of Analysis: Sep 14, 2023

Best By Date: Sep 13, 2025

Cannabinoid Potency - Expected CBD: 8.80

mg/g ± 10%



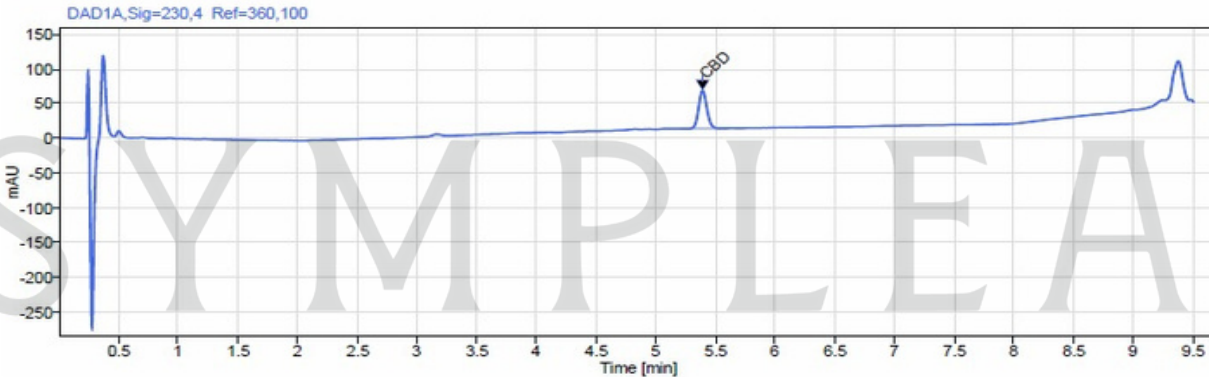
Total CBD:	mg/g	%LOQ	(mg/g)
CBD:	8.90	0.89%	0.05 mg/g
CBDa:	8.90	0.89%	0.05 mg/g
d9-THC:	<LOD	<LOD	0.05 mg/g
CBC:	<LOD	<LOD	0.05 mg/g
CBG:	<LOQ	<LOQ	0.05 mg/g
CBGa:	<LOD	<LOD	0.05 mg/g
CBN:	<LOD	<LOD	0.05 mg/g
CBDV:	0.52	0.05%	0.05 mg/g
d8-THC:	<LOD	<LOD	0.05 mg/g
THCa:	<LOQ	<LOQ	0.05 mg/g
Density:	1.000	Specific Gravity: 1.003	

*Total d9-THC and CBD are calculated taking into account the loss of a carboxyl group during decarboxylation. The formulas are as follows : d9-THC = d9THC + (THCa *(0.877)) CBD = CBD + (CBDa *(0.877))

**Any compounds with results listed as "<LOD" were below the Limit of Detection and were not detected.

***LOQ is the limit of quantitation for any given analyte.

Chromatogram



Prepared By: M. McGraw
Analytical Lead
Sep 18, 2023

M. McGraw

Reviewed By: E. Casey
Formulation and R&D Manager
Sep 18, 2023

E. Casey



Analyzed via HPLC Under These Conditions: Humidity: 31% Temperature: 69.1 °F

ISO 9001:2015 Certificate Number: US4293

Certificate of Analysis test results are based only on the analysis of the product listed in the "Product Description" of this form. Hammer Enterprises, LLC, makes no claims as to the efficacy, safety, or other risks associated with any detected or non-detected compounds reported herein. All analyses conducted at Hammer Enterprises, LLC, is performed on well-maintained, quality instruments utilizing Good Laboratory Practices and validated methodology. This Certificate may not be reproduced except in full, without the written approval of Hammer Enterprises, LLC. **DISCLAIMER:** When reviewing certificate ensure watermark is complete and intact. Watermark will present as repeating HE logos diagonally across the entire page. The authenticity of this document is not guaranteed if there is evident modification, blocking, or alterations of the watermark.



Product Specification Sheet
 CBD Topical Cocoa Butter
 Lotion w/ Peppermint and
 Eucalyptus

Document#: LTN-ISO-COB2-OEUC-OPPT
 Version: 1.0
 Date: 22SEP2020
 Supersedes: NEW

30616 Bryant Drive
 Evergreen, CO 80439

Isolate
 Product Code:
 LTN-1000-ISO-COB2-OPTE-

Completed By:MLM
 Invoice #:2023-259.2

SECTION 1: PRODUCT DETAILS OEUC

PRODUCTNAME	CBDTopicalCocoaButterLotion,PeppermintandEucalyptus,Isolate
PRODUCTDESCRIPTION	Hemp-derivedCannabidiol(CBD)CocoaButterLotion,PeppermintandEucalyptus,Isolate
INTENDEDUSE	Forexternaltopicaluseonly. Donotapplyonbrokenskinoropenwounds.

COUNTRYOFORIGIN	USA	LOT#	LTN-25623-B1
MANUFACTURED	DATE	EXPECTEDCBD	POTENCY
	Sep13,2023	1010.1mg/113.5g	
BESTBYDATE	Sep13,2025	NETWEIGHT	4oz(113.5g)percontainer

SECTION 2: INGREDIENT INFORMATION

INGREDIENTS LIST

Ingredients: Deionized Water, Organic Extra Virgin Coconut Oil, Emulsifying Wax NF, Organic Cocoa Butter, Organic Extra Virgin Olive Oil, Vitamin E, Organic Eucalyptus Oil, Organic Peppermint Oil, Aloe Powder, Optiphen Plus, Hemp Cannabidiol (CBD) Isolate, Citric Acid, Potassium Sorbate, Organic Chamomile Oil. (Contains <0.3% THC)

The FDA has not evaluated this product for safety or efficacy. This product is not intended to diagnose, treat, cure or prevent any disease.

SECTION 3: STORAGE AND HANDLING

STORAGEANDHANDLING Storeinoriginalcontainerinacool, darkplace. Keepoutofdirectlightandhumidity.

This document is provided for documentation purposes only. The information contained herein is believed to be accurate and represents the best information currently available to Hammer Enterprises Integrated Solutions, LLC. However, Hammer Enterprises Integrated Solutions, LLC makes no warranty, expressed or implied, regarding such information, and assumes no liability resulting from its use. Users should make their own investigations to determine the information suitability for their particular purposes. If there are any questions concerning the information contained in this sheet or its applicability to a particular use, the user is instructed to contact Hammer Enterprises Integrated Solutions, LLC. Hammer Enterprises Integrated Solutions, LLC assumes no responsibility for injury from the use of the product described in this sheet in a way different from that provided in the label direction

W E L L N E S S