



Customer: **Wildflower Hemp Co**
 Address: **5000 Centregreen Way Suite 500 - #5010**
 Sample ID: **CBD + Zinc tablets**
 Matrix: **Edible**
 Labnumber: **23G0004-04** Total mass or volume per unit (g or mL): .3357

Cannabinoid Profile

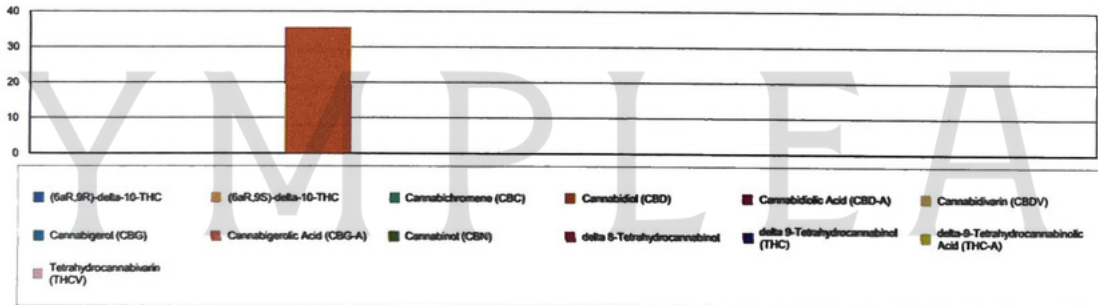
Test Conditions: 22°C
 Extraction Technician: CQ
 Analytical Chemist: CB

Extraction Date(s)	Analysis Date(s)
7/5/2023	7/6/2023

Cannabinoids (HPLC)	Results			
	LOD (mg/g)	%	mg/g	mg/Tablet
Cannabidivarin (CBDV)	<0.040			
Cannabidiolic Acid (CBD-A)	<0.040			
Cannabigerolic Acid (CBG-A)	<0.040			
Cannabigerol (CBG)	<0.040			
Cannabidiol (CBD)		3.55	35.5	11.9
Tetrahydrocannabivarin (THCV)	<0.040			
Cannabinol (CBN)	<0.040			
Cannabichromene (CBC)	<0.040			
delta 9-Tetrahydrocannabinol (THC)	<0.070			
delta-9-Tetrahydrocannabinolic Acid (THC-A)	<0.070			
delta 8-Tetrahydrocannabinol	<0.070			
(6aR,9S)-delta-10-THC	<0.070			
(6aR,9R)-delta-10-THC	<0.070			
Cannabinoids Total		%	mg/g	
Max Active THC (delta-9-tetrahydrocannabinol)		<0.007	<0.070	
Max Active CBD		3.55	35.50	
Total Cannabinoids		3.55	35.50	

Following USDA guidelines on uncertainty, Altitude Consulting's uncertainty is calculated to be +/- 5% for all cannabinoids using a coverage factor of 2 (95% confidence interval). Measurement uncertainty has not been factored into reported values. Blank results indicate the compound was below the limit of detection.

Cannabinoid (mg/g)



Gary Brook - Laboratory Director - 7/6/2023

Reporting Limits will vary based on sample extraction weight used for the analysis.

The results of this report are based solely on the sample submitted and cannot be reproduced. Decision Rule: Measurement uncertainty is not accounted for in the reported values. Results are based solely on calculated numbers. Altitude Consulting makes no Statements of conformity. Pesticide, metal, and microbial analyses are subcontracted to ISO 17025 laboratories.



Customer: Wildflower Hemp Co
Address: 5000 Centregreen Way Suite 500 - #5010
Sample ID: CBD + Zinc tablets
Matrix: Edible
Labnumber: 23G0004-04 Total mass or volume per unit (g or mL): .3357

Residual Solvents Profile

Test Conditions: 22°C
Extraction Technician: CB
Analytical Chemist: CB

Extraction Date(s)	Analysis Date(s)
7/5/2023	7/5/2023

Residual Solvents (GC/MS)	Results
	ug/g
Propane	<82.4
Isobutane	<82.4
Methanol	<82.4
Butane	<82.4
Isopropanol	<82.4
Ethanol	<82.4
2-Methylbutane	<82.4
Acetonitrile	<82.4
Acetone	<82.4
n-Pentane	<82.4
n-Hexane	<41.2
Tetrahydrofuran	<82.4
Benzene	<0.824
n-Heptane	<82.4
Toluene	<82.4
Ethylbenzene	<82.4
m+p Xylene	<82.4
o-Xylene	<82.4
Methylene Chloride	<82.4

Gary Brook - Laboratory Director - 7/6/2023

Reporting Limits will vary based on sample extraction weight used for the analysis.
 The results of this report are based solely on the sample submitted and cannot be reproduced. Decision Rule: Measurement uncertainty is not accounted for in the reported values.
 Results are based solely on calculated numbers. Altitude Consulting makes no Statements of conformity. Pesticide, metal, and microbial analyses are subcontracted to ISO 17025 laboratories.